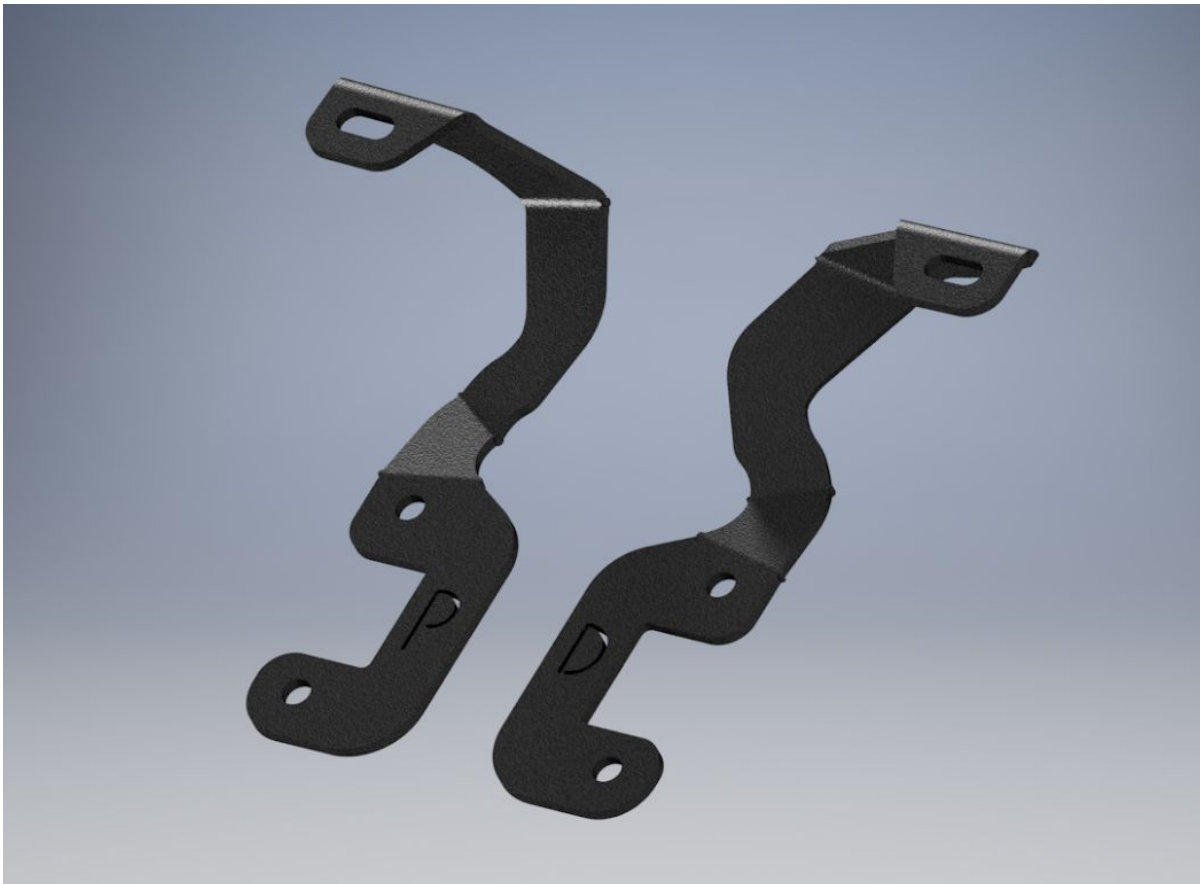




CHEVY COLORADO DITCH LIGHT BRACKET INSTALLATION GUIDE



Hardware Needed:

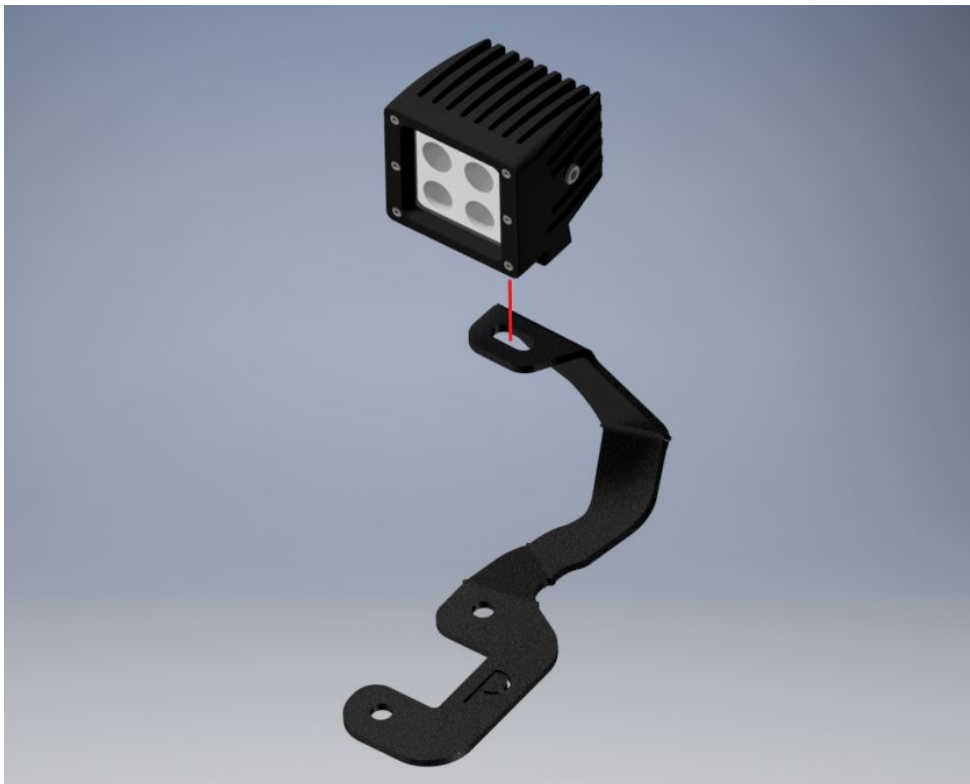
- No additional hardware needed, Mounts using the stock nut/washer combo holding the hood to the hood hinge.

Tools Needed:

- 13 mm wrench

Step #1: Light Attachment

- Attach your light of choice to the ditch light brackets with the hardware provided with your light



Step #2: Nut Removal

- Remove the stock nuts attaching the hood to the hinge using a 13 mm wrench
- * Important only do one side at a time!**



Step #3: Bracket Placement

- With the hood open carefully slide the bracket with light attached under the hood and align the holes with the bolts extending down from the hood



- With the bracket now in line with the bolts replace the stock nuts and snug them up by hand



Step #4: Bracket Alignment

- With the bolts only hand snugged apply slight pressure horizontally to the side of the light/bracket to bring the bracket into perfect alignment



Step #5: Hood Closure

- Slowly lower the hood up and down to make sure everything is attached correctly and there are no fitment issues

Step #6: Second ditch light bracket

- Repeat Steps 1 thru 5 for the second ditch light bracket on the other side of the vehicle